

**Hang It Faster!!!**®

# Warwick Hanger Company

34 CANAL STREET WESTERLY, RI 02891  
 PHONE 401-596-8062 FAX 401-596-8063  
 www.WarwickHanger.com

## Standard Clevis Hanger

**Size Range** — Size 1/2" thru 36" pipe.

**Material** — Carbon Steel

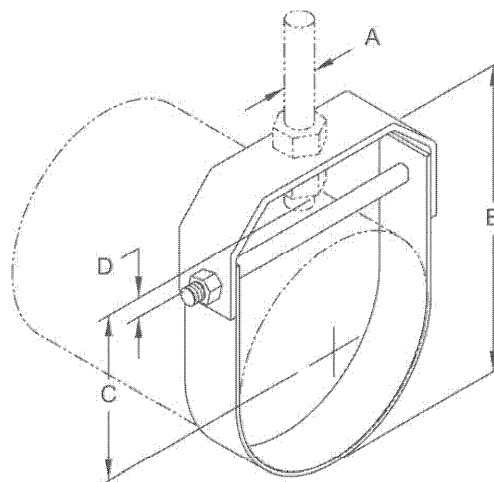
**Function** — Recommended for the suspension of non-insulated pipe or insulated pipe with Fig. 220 shield.

**Note** — When an oversized clevis is used, a pipe spacer should be placed over the cross bolt to assure that the lower U-strap will not move in on the bolt.

**Maximum Temperature** — 650°F

**Finish** — Plain or Galvanized

**Approvals:** Complies with Federal Specification WW-H-171E & A-A-1192A Type 1 and Manufactures Standardization Society MSS SP-58 & SP-69 Type 1.



### Dimensions • Weights

Pipe Size	Rod Size A		B	C	D	Max. Rec. Load Lbs.	Approx. Wt./100
	STD	NFPA					
1/2	3/8	3/8	2 <sup>1</sup> / <sub>16</sub>	1 <sup>3</sup> / <sub>16</sub>	1	610	36
3/4	3/8	3/8	2 <sup>7</sup> / <sub>16</sub>	1 <sup>7</sup> / <sub>8</sub>	1	610	38
1	3/8	3/8	3 <sup>1</sup> / <sub>4</sub>	2 <sup>1</sup> / <sub>16</sub>	1	610	42
1 <sup>1</sup> / <sub>4</sub>	3/8	3/8	3 <sup>9</sup> / <sub>16</sub>	2 <sup>1</sup> / <sub>4</sub>	1	610	46
1 <sup>1</sup> / <sub>2</sub>	3/8	3/8	3 <sup>7</sup> / <sub>8</sub>	2 <sup>3</sup> / <sub>8</sub>	1	610	49
2	3/8	3/8	4 <sup>7</sup> / <sub>16</sub>	2 <sup>3</sup> / <sub>4</sub>	1	610	55
2 <sup>1</sup> / <sub>2</sub>	1/2	3/8	5 <sup>5</sup> / <sub>16</sub>	3 <sup>1</sup> / <sub>4</sub>	1	1130	124
3	1/2	3/8	5 <sup>15</sup> / <sub>16</sub>	3 <sup>1</sup> / <sub>2</sub>	1 <sup>1</sup> / <sub>4</sub>	1130	140
3 <sup>1</sup> / <sub>2</sub>	1/2	3/8	6 <sup>7</sup> / <sub>16</sub>	3 <sup>3</sup> / <sub>4</sub>	1 <sup>1</sup> / <sub>4</sub>	1130	152
4	5/8	3/8	7 <sup>3</sup> / <sub>8</sub>	4 <sup>1</sup> / <sub>4</sub>	1 <sup>1</sup> / <sub>2</sub>	1430	190
5	5/8	1/2	8 <sup>15</sup> / <sub>16</sub>	5 <sup>1</sup> / <sub>4</sub>	1 <sup>1</sup> / <sub>2</sub>	1430	235
6	3/4	1/2	9 <sup>13</sup> / <sub>16</sub>	5 <sup>1</sup> / <sub>2</sub>	1 <sup>1</sup> / <sub>2</sub>	1940	317
8	3/4	1/2	12 <sup>9</sup> / <sub>16</sub>	7 <sup>1</sup> / <sub>8</sub>	2	2000	428
10	7/8	5/8	16 <sup>1</sup> / <sub>4</sub>	9 <sup>5</sup> / <sub>8</sub>	3 <sup>1</sup> / <sub>4</sub>	3600	918
12	7/8	5/8	18 <sup>9</sup> / <sub>16</sub>	10 <sup>13</sup> / <sub>16</sub>	3 <sup>3</sup> / <sub>8</sub>	3800	1086
14	1	—	20 <sup>3</sup> / <sub>4</sub>	12 <sup>5</sup> / <sub>8</sub>	4	4200	1267
16	1	—	22 <sup>7</sup> / <sub>8</sub>	13 <sup>3</sup> / <sub>16</sub>	3 <sup>3</sup> / <sub>4</sub>	4600	1930
18	1	—	25 <sup>3</sup> / <sub>4</sub>	15 <sup>9</sup> / <sub>32</sub>	4 <sup>7</sup> / <sub>16</sub>	4800	2264
20	1 <sup>1</sup> / <sub>4</sub>	—	28 <sup>13</sup> / <sub>16</sub>	17 <sup>1</sup> / <sub>16</sub>	5 <sup>3</sup> / <sub>16</sub>	4800	3531
*24	1 <sup>1</sup> / <sub>4</sub>	—	32 <sup>1</sup> / <sub>8</sub>	18 <sup>1</sup> / <sub>4</sub>	4 <sup>7</sup> / <sub>16</sub>	4800	4431
*30	1 <sup>1</sup> / <sub>4</sub>	—	38 <sup>7</sup> / <sub>8</sub>	21 <sup>1</sup> / <sub>8</sub>	5	6000	6940
*36	1 <sup>1</sup> / <sub>2</sub>	—	48	27 <sup>3</sup> / <sub>4</sub>	5 <sup>3</sup> / <sub>4</sub>	9500	18103