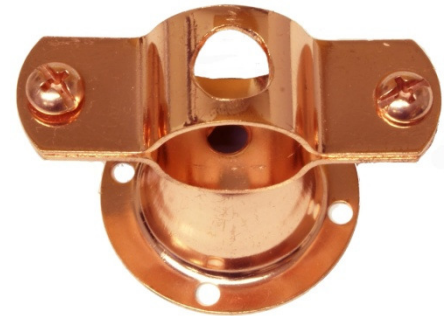
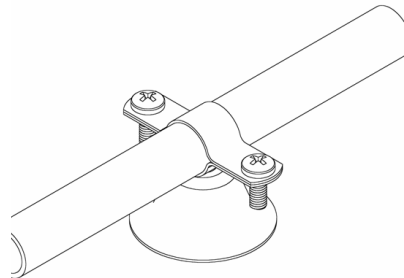


Series 300
Copper Plated Bell Hanger

Size Range: 1/2" - 2"
Material: Carbon Steel
Finish: Copper Plated
Function: Used to mount copper tubing.



Our Copper Plated Bell Hanger has a patented access hole through the top which allows the hanger to be mounted to most flat surfaces without disassembling the cap. We have added 4 additional mounting holes around the base of the bell for additional mounting flexibility. Our hanger is used as a standoff clamp in both vertical and horizontal applications and provides 3/4" standoff.



The Center Screw Has Been Pre-Installed

Part #	Size	Packaged	Case Quantity
300-2	1/2"	25	500
300-3	3/4"	25	500
300-4	1"	25	500
300-5	1 1/4"	25	N/A
300-6	1 1/2"	25	N/A
300-7	2"	25	N/A

Hang It Faster!!!